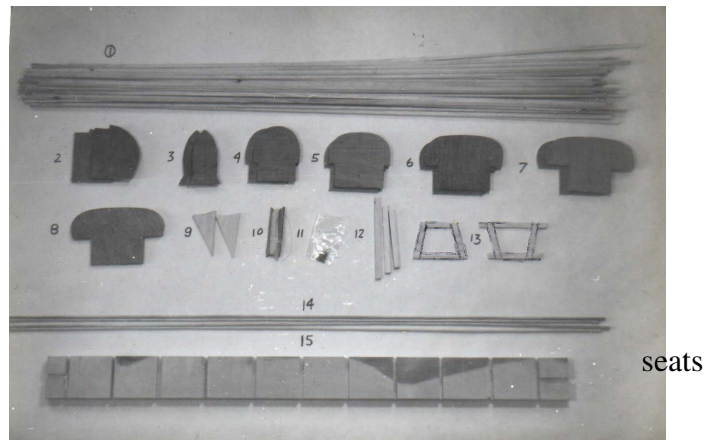


Thank for purchasing a Rocky Oaks model canoe kit. You'll have hours of enjoyment constructing this 2 inch= 1 foot scale model of an 18' E.M. White guide canoe. E.M. White was born and brought up on the Penobscot River in Maine and built his first canoe in his father's oar making shop. Some one bought the finished canoe on it's maiden voyage, and the White Canoe Co. was launched. White took the original lines for the canoe from those of the Indian canoes that inhabited the miles of the Penobscot water for centuries. The construction of this kit is identical to the building the full size version. Construction of this kit is requires basic tools and wood working skills. The final results of smoothing and sanding is what will bring out the best in the kit. Hang it on your wall or mantle and enjoy for years to come.

Materials supplied with the kit:

- #1 35 full length strips, extras included
- #2 - #8 13 plywood forms
- #9 Bow and stern decks
- #12 Bow, stern and center thwarts
- #13 8 pieces for the two seats
- #14 4 rounded over sheer rails
- #15 1 set up strong back
- #11 Pkg of brass brads for thwarts and
- #10 10' of weaving string for seats



Materials not supplied in kit:

- Hot glue gun and fast dry glue
- 2 tubes of modeling cement
- Small pair of needle nose pliers
- Wire snips for trimming pieces
- Razor knife
- Small hobby plane (optional)
- Cellophane tape
- Sand paper
- Wood filler
- 1/16" drill bit
- Varnish or other choice of finish.
- Common push pins used for sewing

If any pieces are missing, contact supplier

Setting up the strong back



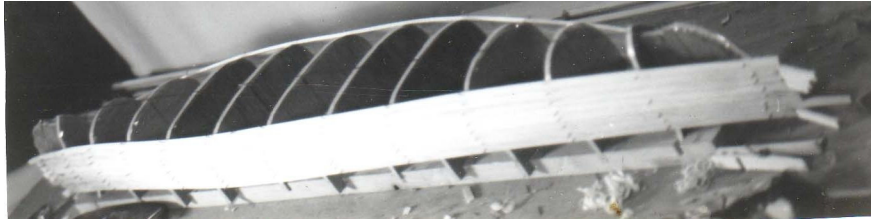
1. Secure the strong back to a piece of plywood or board that is approximately 12" wide by 40" long. Fasten it from underneath the work platform so you can remove the screws once the model is complete.
2. Place the two stem forms marked A into the slot A on the strongback and secure with a bead of glue or secure with a couple of push brads that can be easily pulled out later. Hot glue gun works great for this since it is easy to break apart afterwards.
3. Place the two form marked B into slot B on the strongback, line up centering lines and glue together
4. Glue in place the forms marked C in to slot C, lining up the centering lines. Continue this process with the rest of the marked forms into their prospective slot.
5. Be sure all forms are secure in their slot and centered. Now you should be able to see the shape of the canoe.
6. Cover all the edges of the forms with cellophane tape to prevent glue from sticking

Process of gluing the strips over the forms



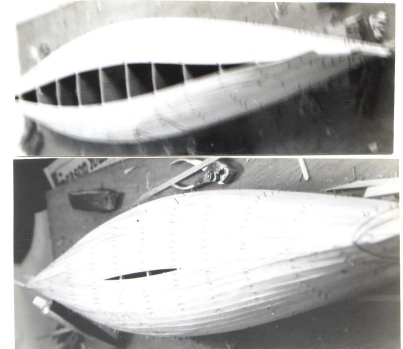
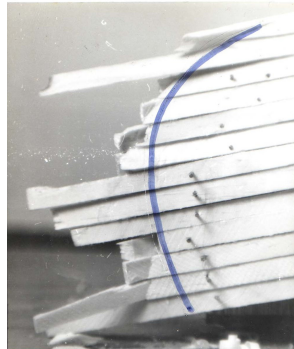
7. The sheer strip is the first and most important of all the strips since this will dictate the sheer line of the canoe. Start by pushing a pin through one end of a strip approximately 1/2" from one end. Place the strip on to the form A and secure with the pin. Working towards the opposite end, make a clean, smooth sweeping curve over the frames, using the bottom edge of each form as a guide though it could vary slightly. Push a pin through the strip in to each form until you have a complete strip in place. Look at it from different angles and be sure that it has smooth lines and is the same from one end to the other. If not, pull your pins and do over until satisfied. Turn the whole project around and do the same on the other side. This time, trim the end of the strip to butt snugly against the first strip at the stem. There is much room for sloppiness at the stem since imperfections after it is trimmed can be filled with a natural wood filler and will be difficult to detect. Now the stripping of the canoe starts.
8. Have a push pin already through the end of the next strip. Apply a consistent small bead of modeling cement or hot glue to the edge of the bottom strip. The only problem with the glue gun is that it is unforgiving and cools quickly. Either way, with the glue in place, quickly snug the new strip to the top edge of the sheer plank and push a pin into each form to secure the strip while the glue dries. When the

plank meets the other plank at the stem, trim and fit to match up with it's opposite strip. Continue this process, alternating from one side to the other. Be sure the strips are being held tightly to the forms and



are taking the **twist** of the different angles present on the forms. The strips around what will be the waterline are the most difficult to twist and hold to the shape of the forms, so extra time should be taken. Using a small inexpensive hobby wood plane to bevel the edges of the strips will produce a tighter fitting strip. If the edge of some of the strips happen to not be laying quite flat to the form, they can be sanded smooth in the final stages of finishing. Sanding these raised edges on the outside is easy, but more difficult when you have to do it on the inside, so try to avoid this as much as possible. As the forms are getting covered with the strips and you are closing in on the center of the forms, you will have to trim the strips at angles so they carefully fit in to place until the whole forms is covered. Allow to dry a day or two before proceeding to the next step.

8. Now you have a roughed in canoe with strips protruding at different lengths at the bow and stern. Draw a smooth curver to the shape of the stem with a pencil. Then cut the ends of the strips to the pencil line using a hobby saw, Chinese back saw or small circular saw in a dremel tool. Be careful not to break or dislodge any strips. If you do, glue again and let dry before proceeding. Sand smooth and fill in any voids with a natural wood filler. Now you can pull all the pins out that were used to hold the strips in place. Carefully sand the whole model till it is smooth. Apply a coat of finish as a sealer to keep it more rigid and intact before proceeding to the next step.



9. Now remove screws that are holding the strongback to the plywood and flip the canoe upright

10. Carefully dislodge each form from its slot on the strongback. The bead of hot glue should break free. If it doesn't, cut the bead so the forms will come out.

11. With the strong back out of the way, slowly and carefully remove each form from the inside of the canoe, being very careful to not dislodge any strips. Remove them all. .

12. Now it is time to smooth the interior of the model. This is a little more difficult than doing the outside but should only take an hour or so. A curved sharp scraper works well here, taking any high edges of the strip down until it is smooth. In the tighter areas near the bow and stern, you will have to use a coarse grit paper to smooth it all out. The whole time, being careful to not using excessive force in one area which could break free a strip. If one does become loose, apply new cement and dry.

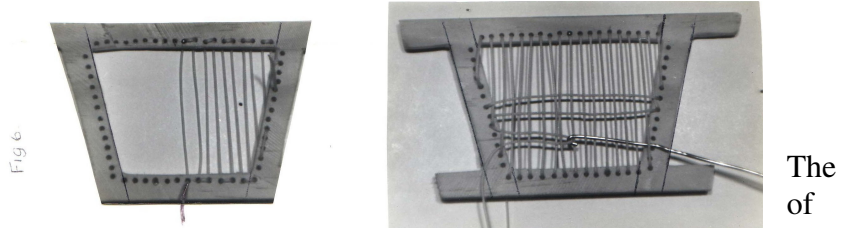
13. Once it is smooth inside and sanded to at least 100 grit, clean, blow out and apply a coat of finish.

14. Glue in place the bow deck and stern deck in place, flush with the top of the sheer plank. It might have to be sanded one way or the other to make it fit snugly forward and aft.

15. The rounded sheer rails might need sanding before installing them. Glue the rounded sheer rails to the outside edge of the model. You can use clothespins to hold it place while the glue dries. Put both sides on keeping them flush with the sheer plank. Then glue the inside rail in place. It will butt against the inner edge of each bow and stern deck. Fit and cut before gluing to insure a snug fit. Use clothespins to hold together tight while the glue dries. Once it is dry, sand the top smooth. Now is a good time to sand again and apply several coats of the finish before putting the seats and other obstacles in the way.

16. Glue the over lapping pieces to make the seat frames as in the diagram. Once the glue is dry, sand and shape them to fit snugly along the sides of the canoe but do not glue in place yet.

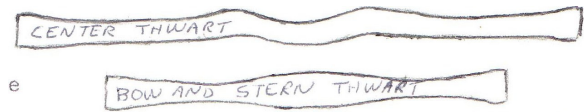
17. Weaving the string in the seat is tricky and will take some attention to detail. Using a small 1/16" drill, make holes along the inside edge of the seat frames as close together as possible. The closer together, the tighter the weave the seat which will look better. Though not mandatory.



18. Cut off half of the supplied twine and fold it half again. Thread one end through the middle of any frame on the seat. Thread it through the opposite hole and then back again. There are many ways to do this, some more difficult than others. The idea is to make a seat that looks like it was "caned". With it completed, several layers of finish holds in all in place.

19. The seats can be glued in place, being sure to keep them level in the canoe.

20. Take the 3 pieces supplied for the thwarts. Draw a shape on it as in the diagram. Use coarse sand paper or a wood file to shape the pieces into a thwart. Sand smooth. Trim the length if needed to fit snugly underneath the inside sheer rails. The stern one will be about 1 3/4" forward of the aft seat. The center one is center and the forward one will be a little aft of the seat. Glue these in place.



21. Using the 1/16" drill, make a hole through the sheer rail into the end of the frame of each seat, as well as through to each thwart. These holes will be for the brass brads glued in place to imitate brass bolts.

22. The model should be quite sturdy now. Turn it over, sand the outside to a finish and apply several more coats of clear finish. An alternative to a bright finish is to sand, prime and paint with a solid color of choice to mimic a canvas canoe. This is very popular as well.

23. Assemble the wall mount. Sand and apply finish.